



Continuous Inkjet

Videojet 1880 UHS

Achieve superior print quality and reliability at high speed



Get top quality at top speed

Built on the 1880 + platform, the Videojet 1880 UHS extends its productivity and connectivity capabilities to ultra-high-speed production lines in the canning, beverage, and wire and cable industries. Engineered to deliver exceptional code quality and unwavering printer reliability, it delivers a transformative solution, where performance meets speed to revolutionize high throughput operations.



HIGH-SPEED PERFORMANCE

Consistent quality at high speed

Engineered for your most challenging applications, the 1880 UHS takes high-speed printing to new heights. By refining the design of printed characters, it delivers impeccable performance, while the enhanced printhead helps deliver consistent print quality, even at speeds surpassing 500 m/min.

Unleash precision and performance: Advanced technology for superior print quality

With its updated auto-modulation feature and advanced hydraulics, the 1880 UHS compact printhead design offers optimised drop positioning and superior jet stability. It automatically adjusts the ink stream per the environmental temperature, while real-time viscosity measurements enable precise drop control at high speeds. The printer helps ensure optimal and consistent code quality for each font. It also comes with an over-moulded umbilical for traversing applications, delivering superior durability.

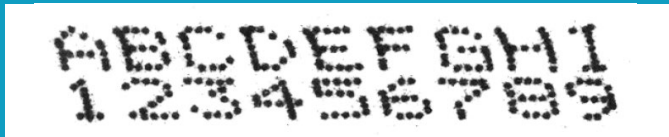


Optimised fonts to limit distortion

Featuring a newly improved set of high-speed fonts and rasters, the 1880 UHS delivers superior print quality with consistency and reliability.

+45% faster
than the 1880 +
on average
top speed

Competitive high-speed code



Videojet high-speed code using optimised drop positioning





Simplify routine maintenance: Planned annual module replacement in less than 5 minutes

With colour-coded, easy-to-replace Videojet SmartCell™ components, the 1880 UHS significantly minimises maintenance downtime and offers optimal performance with long periods between interventions and fewer necessary touches.

Maximise uptime: Proactive alerts, effortless cleaning, and fewer touches

An innovative sensor helps to enable printhead ink build-up detection, alerting users to potential print quality issues before they escalate. The convenient auto-rinse feature ensures a hassle-free, consistent, and efficient printhead cleaning process with a simple click. Say goodbye to ink build-up-related code clipping, as this innovative system virtually eliminates it. What's more, the printer boasts an upgraded hydraulic management system, an extended make-up tank, and the added flexibility of using larger, one-liter cartridges.

Up to
2X fluids
replacement
interval



EtherNet/IP
ODVA

PROFI
NET

Leverage enhanced connectivity: Seamless integration and enhanced productivity

Designed to deliver all the connectivity you need, the 1880 UHS intelligent I/O capabilities offer standard industrial protocols for seamless integration into your production systems. It also takes CIJ printing performance to a higher level with built-in Wi-Fi and cellular* connectivity. It provides easy, secure wireless communications, enabling VideojetConnect™ Remote Service to automate troubleshooting, simplify remote operation, and improve overall printer and line productivity in real-time.

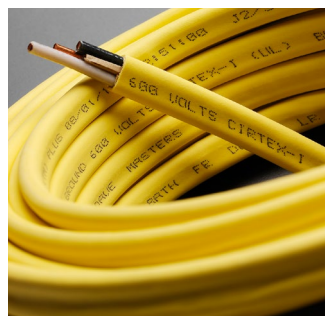
** Subject to availability in your country*



Beverage — metal



Beverage — plastic



Extrusion — plastic



Food — metal

Videojet® 1880 UHS

Continuous Inkjet

Line speed capability

Can print 1 to 3 lines of print at speeds of up to:
Single line max speed = 1,666 ft/min (508m/min)
Dual line max speed = 835 ft/min (254m/min)
Tri-line max speed = 588 ft/min (179m/min)
(10 characters per inch, single line of print)

Font matrix configuration

Single-line: 4x5, 5x5, 4x7, 5x7, 7x9, 9x12, 10x16, 16x24
Twin-line: 4x5, 5x5, 4x7, 5x7, 7x9
Tri-line: 4x5, 5x5, 4x7, 5x7

Linear bar codes

UPC A&E; EAN 8 & 13; Code 128 A, B & C; UCC/EAN 128; Code 39;
Interleaved 2 of 5; GS1

DataMatrix codes

10x10, 12x12, 14x14, 16x16, 8x18, 18x18, 20x20, 22x22, 24x24, 12x26,
8x32, 12x36, 16x36

QR codes

21x21
Error correction mode L, M, Q or H

Nominal character height

Selectable from 0.079" (2mm) to 0.40" (10mm), depending on font

Throw distance

Optimal: 0.591" (15mm)
Range: 0.354" (9mm) to 0.787" (20mm)

User interface

10.4" high-response TFT-LCD touch screen
WYSIWYG touch to edit message editing

Custom logo/graphics

Can be created via optional CLARISOFT™ software*

Character sets

Chinese, Russian/Bulgarian, Turkish/Scandinavian, Romanian, Greek, Arabic,
Japanese/Kanji, Hebrew, Korean, East European and European/American

Languages and interface options

English, Arabic, Bulgarian, Czech, Danish, Dutch, Finnish, French, German, Greek,
Hebrew, Hungarian, Italian, Japanese, Korean, Norwegian, Polish, Portuguese,
Russian, Serbian, Simple Chinese, Spanish, Swedish, Thai, Traditional Chinese, Turkish,
and Vietnamese

Input/output

Product detect input; Encoder input; Beacon (Alarm light) output; Relay output;
USB 2.0 (2x); Ethernet LAN™; Built-in Wi-Fi

Message storage

More than 250 complex messages

Environmental protection

IP55 standard, no plant air required, stainless steel cabinet
IP66 protected electronics optional

* CLARISOFT™ Package Coding Design software required for certain bar codes and other advanced functionality.

Printhead

CleanFlow™ including positive air, no plant air required (optional)
Diameter: 1.63" (41.3mm)
Length: 10.62" (269.8mm)

Printhead umbilical

Ultra flexible Length: 9.84' (3m) optional 19.69' (6m)
Diameter: 0.91" (23mm)
Bend radius: 4.0" (101.6mm)

Make-up consumption

2.7ml per hour (MEK at 20°C)

Fluids containers

Ink and Make-up Smart Cartridge™ 1.06 qt (1000ml); optional 0.793 qt (750ml)

Temperature/humidity range

41°F to 113°F (5°C to 45°C)

0% to 90% RH non-condensing

With selected inks; actual installation may require additional hardware based on production environment conditions

Electrical requirements

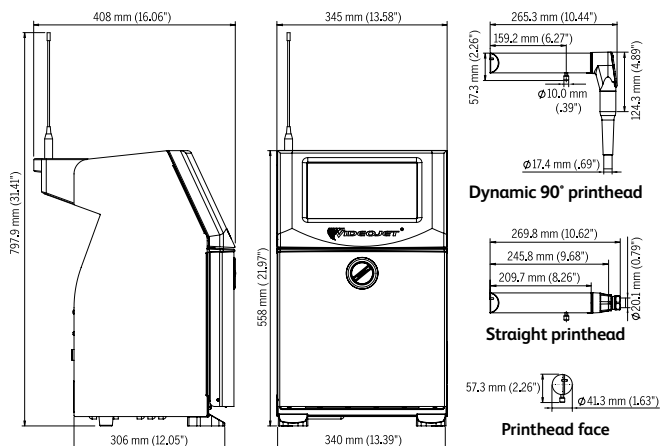
Nominal supply power 100-120 / 200-240 VAC at 50/60 Hz, 70W

Approximate weight

Unpacked and dry: 46.3lbs. (21kg)

Options

Dust protection kit with CleanFlow™ technology
Dry air kit for high humidity (requires plant air)
Cellular communication
RS232 connector kit (USB to Serial DIN-5 male adapter)
SIMPLICITY™ Workflow Modules
Wide range of accessories



Call us free on **0800 500 3023**
Email **uksales@videojet.com**
or visit **www.videojet.co.uk**

Videojet Technologies Ltd.
4 & 5 Ermine Centre, Huntingdon, Cambridgeshire PE29 6XX / UK

Call us free on **+353 1 450 2833**
Email **irelandsales@videojet.com**
or visit **www.videojet.ie**

Videojet Ireland
C2, South City Business Park, Tallaght, Dublin 24 / Ireland

© 2023 Videojet Technologies Inc. — All rights reserved.

Videojet Technologies Inc.'s policy is one of continued product improvement. We reserve the right to alter design and/or specifications without notice.

Part No. SL000727
br-1880-uhs-en-0923

